



The Salish Weave team welcomes you to our first newsletter. We hope this will be a convenient vehicle to occasionally apprise you of acquisitions, exhibits, projects, and of course, to encourage you to visit our website.

RECENT ACQUISITIONS

Susan Point
Iona Beach - 2012
Ink on Paper

Iona Beach completes the Blue Herons series with *North Arm* and *Canoe Pass* issued in 2011. The artwork in these 3 limited edition serigraphs is based on a public art commission for the 2010 Olympic skating oval in Richmond BC.

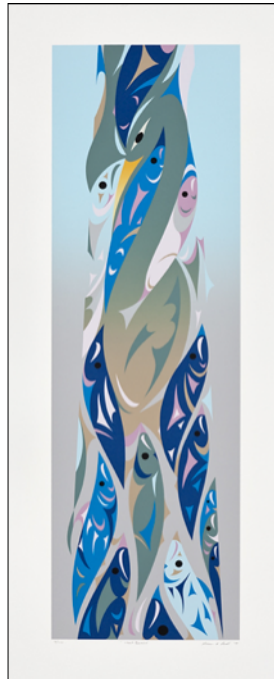
They are further explorations of the design that is incorporated into the structural buttresses that support the building. The imagery in the artwork reflects the ever-changing Fraser River.



North Arm



Canoe Pass



Iona Beach



Spirits of the Cedar

Susan masters the use of Coast Salish design elements to produce intricate, complex images.



Celestial Circles



Behind Four Winds



Summer Catch



The Moon and the Pond

The original acrylics on canvas *Summer Catch*, (2012) by Maynard Johnny Jr. and *The Moon and The Pond*, (2011) by Dylan Thomas have been reproduced as serigraphs to be included in Box Set III.



Coastal Balance

Coastal Balance by John Marston (2012) depicts a bronze door handle designed for the Ladysmith Maritime Society building.

Pacific Currents (John Marston, 2010) hailed from a cultural exchange with Papua New Guinea artist, Teddy Balangu. This print depicts canoes and paddles from both Coast Salish tradition and Papua New Guinea tradition.



Pacific Currents



Salmon Water Waves



Transformline

These 3 serigraphs by lessLIE were all issued in 2012.

Redefining Each Other is based on the design of *Defining Each Other* issued in 2007.

View lessLIE's artist statements on our website.



Redefining Each Other

Thanks for your time. Hope you enjoyed spending it with us.

We are interested in your comments and/or questions. Please do not hesitate to contact us at inquiries@salishweave.com.